

DMX-X02

DMX Live And Stand Alone Controller



Summary

DMX-X02 is a full-color LED DMX control system which focuses on indoor and outdoor decorative lighting, which can be used stand alone or with computer. It comprises scene-edit software. You can edit various lighting effects by downloading the programme which edit according to your special requirement from your PC. This control system can fulfill 256 grey levels for each R,G,B color, totally 16.77 million real full-color. The software has been developed specially for architectural lighting and features easy to use effects which can be dropped onto timelines, along with multi-zone and synchronization allowing you to program a project with multiple rooms and areas with ease

Product Features

- Meets DMX512/1990
- 512 DMX Channels PC or Stand Alone ·USB 2.0 connection program by software
- Various Output Interface, XLR-3 / RJ45 / Green terminal ·SD card of internal memory
- Default scene triggering when power up
- Stand Alone Memory capacity:5000 steps to 100 steps ·Compatible with any DMX fixture and DMX LED driver ·Euchips X-DMX software compatible

Technical Parameters

Input Voltage :	5V DC, 0.15A-1A (by USB)
Power Consumption :	< 2W
Connection :	USB 2.0
Output connector :	XLR3, RJ45, Green
Transmission signal :	Terminal DMX512 (1990)
Output channels :	512 DMX channels
Stand Alone mode :	512 DMX channels
Lamp type :	Wallwashing light, Tube light, Cube light, etc.
OS Requirement :	Windows XP/Vista/Seven/Win10 32/64 1Ghz CPU, 512 MB RAM
PC Software :	Euchips X-DMX
Environment :	IP20, -25°C to 70°C

Introduction of Remote Controller

- For scene switching, brightness control
- The remote controller has a simple and elegant appearance and is light and convenient to use.
- The remote control distance is 30M (without blocking)
- 12V battery powered
- The remote control can only be used after the code is correct.

Code description

On the right side of the DMX-X02, there is a button inside, long press this button, there will be a blue indicator light on, and then press any key on the remote control, the indicator light will go out, at this time the code will be successful; switch scene, switch adjustment brightness indicator will flicker

Introduction of remote controller's button



- A. Switch button, short press LEDs to open and close
- B. Brightness control Key, Level 4 brightness control
- C. According to the set sequence of scenes, the scenes are sequentially switched in ascending order
- D. Switching scenes in descending order according to the set sequence of scenes

Interface Introduction



Pin1 : GND
Pin2 : Data-
Pin3 : Data+



Pin1 : Data+
Pin2 : Data-
Pin7 : GND
Pin8 : GND



M+ :MODE+

M- :MODE-

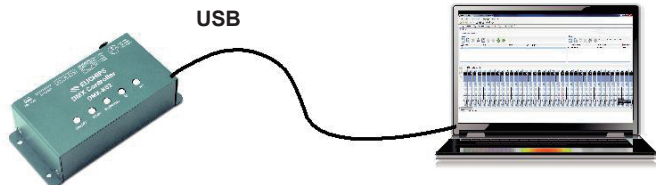
Brightness :4 level brightness

White :switch between RGB and white

ON/OFF : turn on/turn off light

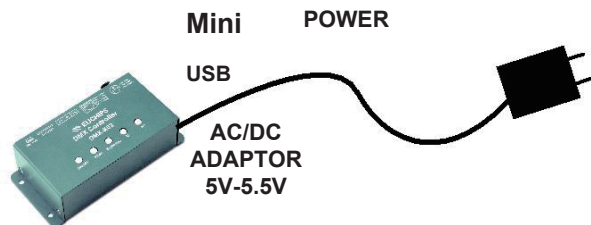
Live Use With Computer

DMX OUT
512DMX Channels

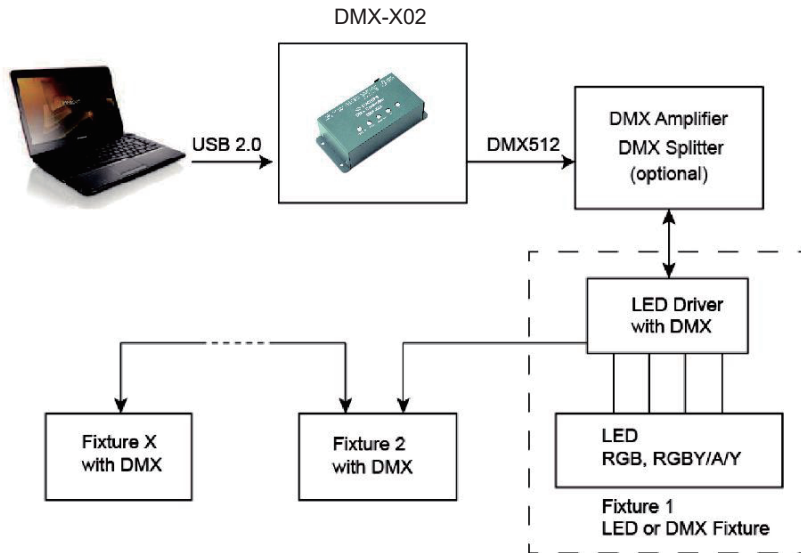


Stand Alone Use

DMX OUT
512DMX Channels

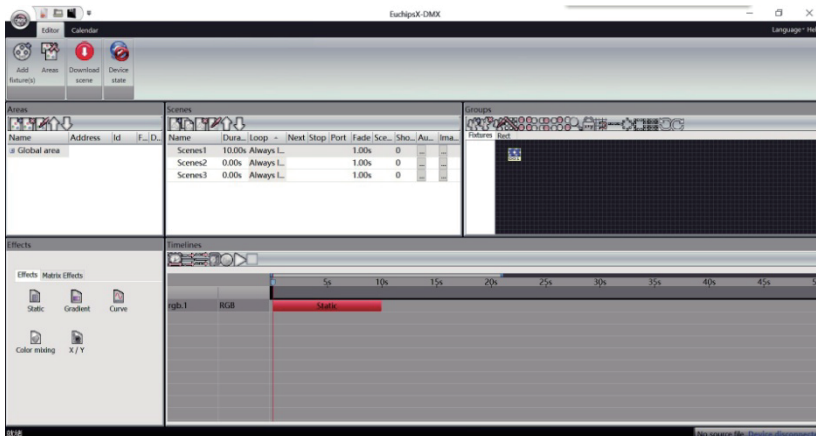


Recommended DMX512 Installation



Software

EuchipsX-DMX has evolved over the years for architectural lighting control. It only requires a few minutes to setup the software and gain full control of any kind of lighting.



DMX-X02

独立模式控制器



概述

EUCHIPS® DMX-X02 是一套用于控制建筑室内外亮化的全彩 LED DMX 控制系统，可以在联机 and 独立两种模式下工作。它包含场景编辑程序，根据不同的需求可以通过电脑下载的程序编辑各种灯光效果。该控制系统实现 R,G,B 各 256 级灰度，共可表现 1677 万种颜色，真正显示全彩色。

产品特点

- 符合 DMX512/1990 国际标准协议
- 512 个 DMX 输出通道（联机和独立模式）
- 可通过 USB 进行编程和联机控制
- 支持输出端口, XLR-3 / RJ45 / 绿色端子
- 内置 SD card, 储存更多的场景
- 适用于任何 DMX 灯具和 DMX 驱动
- 适用软件: Euchips X-DMX software

遥控器介绍

用于场景切换，亮度调节
遥控器外观简约大方, 使用轻巧方便
遥控距离 30M 无格挡物
12V 电池供电
对码后遥控器方可使用

对码说明

DMX-X02 右侧的内部有按钮，长按此按钮，会有蓝色指示灯亮起，然后按遥控器上的任意键，指示灯会灭，此时对码成功；切换场景、开关调节亮度指示灯都会闪烁。

技术参数

输入电压:	5V DC, 0.15A-1A (by USB)
待机功耗:	< 2W
连接方式:	USB 2.0
输出端口:	XLR3, RJ45, 绿色端子
传输信号:	DMX512 (1990)
输出通道:	512 DMX 通道
脱机模式:	512 DMX 通道
系统要求:	Windows XP/Vista/Seven/ Win10 32/64 1Ghz CPU, 512 MB RAM
软件:	Euchips X-DMX
适用环境:	IP20, -25°C to 70°C

遥控器按键介绍



- A 开关键，短按灯具打开和关闭
- B 亮度调节键，4 级亮度调节
- C 按设置的场景顺序依次递增切换场景
- D 按设置的场景顺序依次递减切换场景

注：若按 C D 键，场景无变化时，请检查设置的场景是否下载设备中

端口介绍



Pin1 : GND
Pin2 : Data-
Pin3 : Data+



Pin1 : Data+
Pin2 : Data-
Pin7 : GND
Pin8 : GND



M+ :模式+

M- :模式-

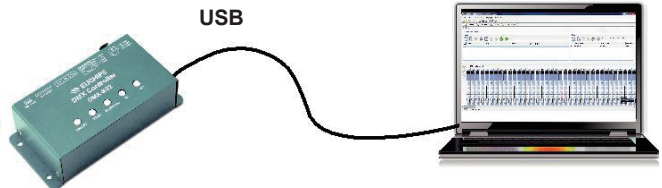
Brightness :4 级亮度调节

White :白光和 RGB 切换

ON/OFF : 开/关

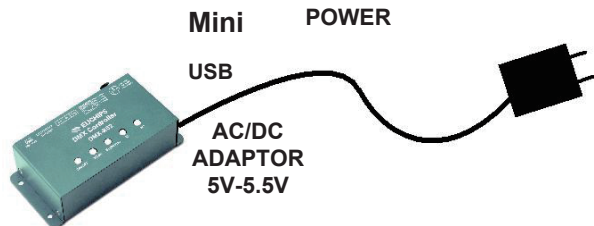
联机模式

DMX OUT
512DMX Channels

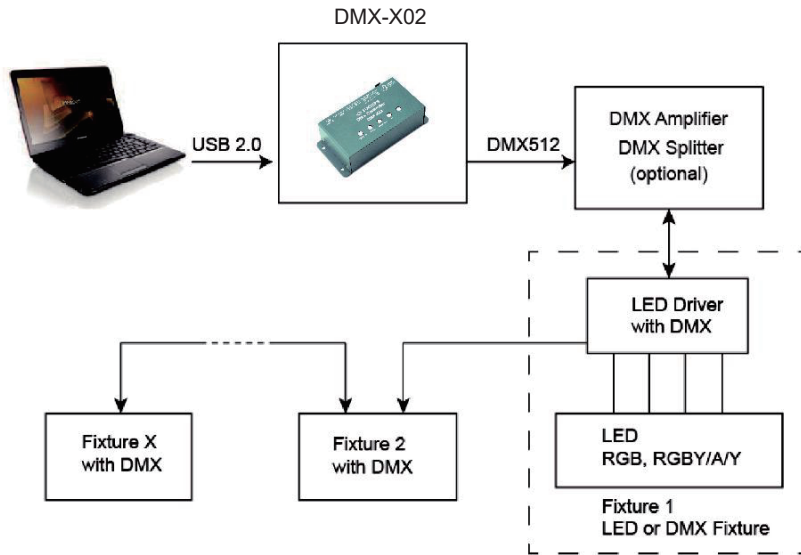


独立模式

DMX OUT
512DMX Channels



DMX512 安装说明



软件

EuchipsX-DMX 软件依据人体工程学做出了许多创新设计，它拥有强大的编辑工具针对最新的照明装置。这款软件是专门用于建筑照明的，特点是易于操作，可以在许多房间，多区域同步的编辑软件。

