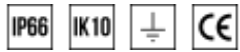
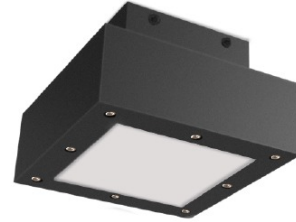


# KEPT



## General data:

luminaire body:	aluminum
Mounting type:	wall/ceiling
ingress protection IP:	66
luminaire nominal power:	from -40° to +45°
lifetime L80B10:	50 000h
impact protection IK:	10



## Electrical data:

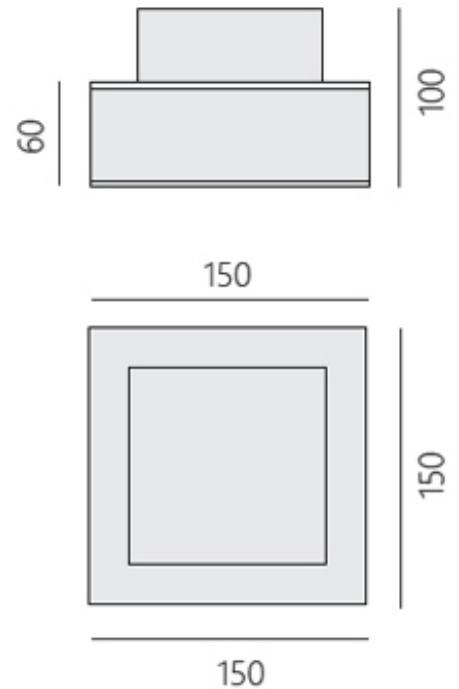
nominal voltage:	220-240V AC
nominal frequency:	50-60Hz
luminaire nominal power:	10W
protection class:	I
connection:	wire 3x1mm <sup>2</sup>
wiring :	standard
connection wire:	0,25m
dimming:	ON-OFF
power supply:	inside the luminaire

## optical data:

optical system:	opal diffuser
material:	glass
light emission:	direct
light distribution:	symmetrical

## Lighting data:

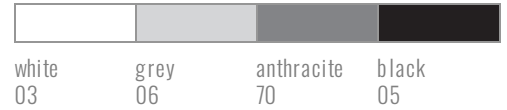
light source:	LED
colour rendering index:	CRI>80 (na zapytanie: CRI>90)
colour tolerance SDCM:	SDCM<3
tolerance of luminous flux:	+/-10%



Kept outdoor luminaire mounted directly to the ceiling. It allows you to illuminate external communication routes or building facades. The use of an aperture in the form of a milky diffuser allowed to obtain an even distribution of light. Kept is a family of luminaires with different powers, dimensions, different types of assembly and application, while maintaining a uniform design.

**C- colour**

**optics**  
120 – 120°



Catalogue code	Luminaire light flux	Power	Effectiveness	Color temperature	CRI/RA	Weight	Box dimensions
9128.020C	526lm	10W	57lm/W	2700K	≥80	1,95kg	250x250x150mm
9128.030C	547lm	10W	57lm/W	3000K	≥80	1,95kg	250x250x150mm
9128.040C	570lm	10W	57lm/W	4000K	≥80	1,95kg	250x250x150mm