

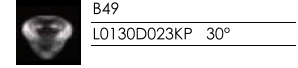


## RGB LED Underwater Spot Light

LED Wave Length

R =620-630 nm  
G =520-530 nm  
B =460-470 nm

Optics



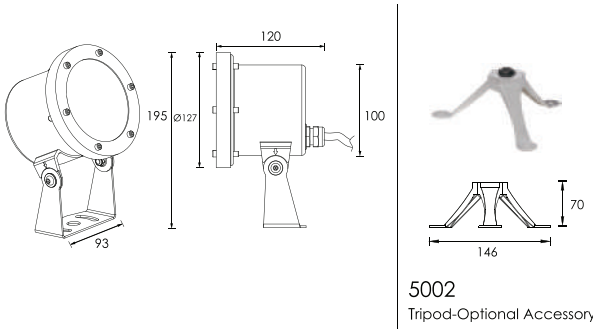
**B49**



30°

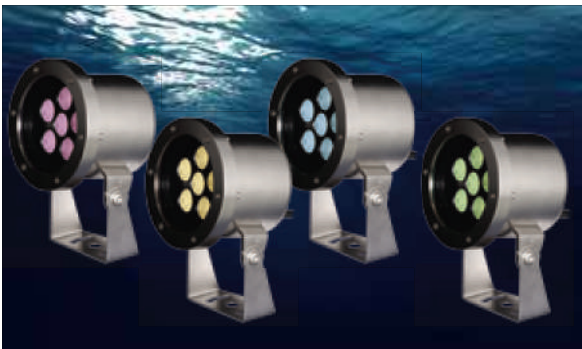
### Outer Dimensions

Unit:mm



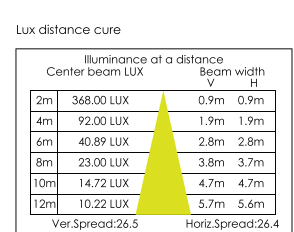
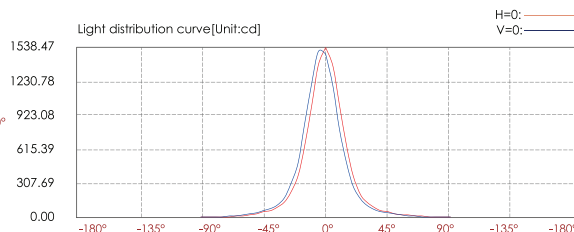
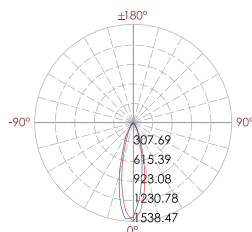
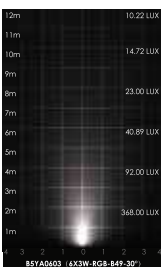
### Material Specifications

Front cover&Housing	Hard chromeplated Molding shaped stainless steel SUS 316L#
Light Window	PMMA 8mm
Gasket	EPDM gasket
LED	SMD 3535 RGB 3 IN 1
Cable gland	IP68 PG-11 copper with nickel-coated
PCB	Excellent heat conductivity aluminum, coefficient of heat conductivity≥2.0w/mk
LED Driver	Constant Voltage Input,Constant Current Output
Power Cable	H07RN-F 4X1.0mm2 L=3.0m
Built-in Overheat Sensor System	Automatic Shutdown at 75°C
Application environment	Temperature of water between -20°C~40°C less than 1 meter depth.



**Warning:**  
Must be installed under the water to prevent the light from being burnt off because of over-heating.

Item	Light source	Lens	The manufacturer selected lens degree(°)θ1/2	Input voltage(V)	Typical operating current(mA)	Typical consumption(W)	Typical luminance(lm)	IK rate
<b>B5YA0603</b>	6×3W RGB 3IN1	B49	30°	24V DC	1000	24	528	10



For more photometric data , please access Kapego website [www.kapego.com](http://www.kapego.com)