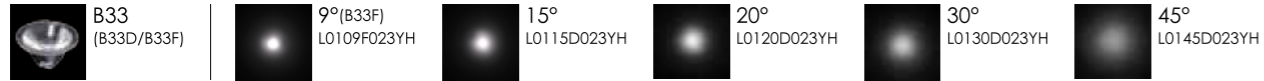




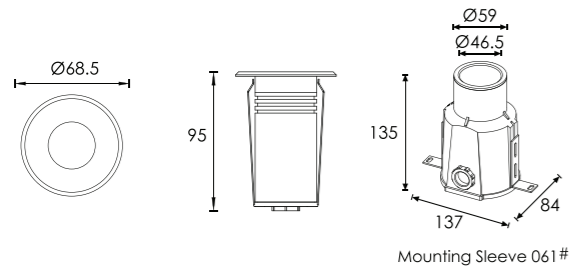
OPTICS



LED COLOUR TEMPERATURE

2000K · 3000K · 6000K

OUTER DIMENSIONS & ACCESSORIES Unit:mm



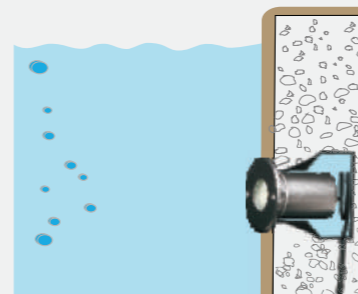
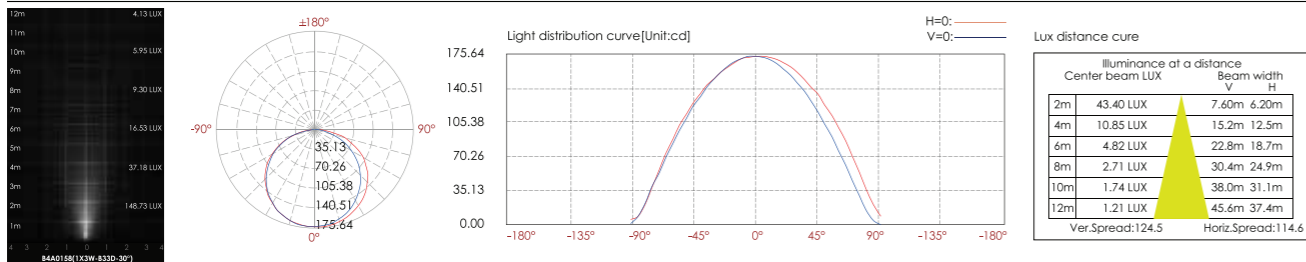
MATERIAL SPECIFICATIONS

FRONT COVER & HOUSING	Hard chromeplated molding shaped stainless steel SUS 316#
LIGHT WINDOW	1 Step tempered glass.T=7mm
GASKET	1 Silicone Gasket
LENS	1 Optical lens,efficiency≥85%
PCB	1 Excellent heat conductivity aluminum.coefficient of heat Conductivity≥2.0w/mk
LED DRIVER	1 Constant Voltage Input,Constant Current Output
POWER CABLE	1 H07RN-F 2X1.0mm ² L=3.0m
APPLICATION ENVIRONMENT	1 Temperature of water between -20°C~40°C less than 1 meter depth.
MOUNTING SLEEVE	1 061# ABS
DIMMABLE SUPPORT	1 Triac PWM 1-10V Dali

TECHNICAL DATA

ITEM	LIGHT SOURCE	LENS	LENS DEGREE(°)Ø1/2	INPUT VOLTAGE(V)	OPERATING CURRENT(MA)	CONSUMPTION(W)	LUMINANCE(LM)	IK
B4A0158	1×3W	B33D	30°	24V DC	110	2.6	Cool White = 174 Warm White = 139	06

PHOTOMETRIC CURVES



•Water must be allowed to go inside and outside sleeve freely without leaking to the other side.
•Warning : Must be installed under the water to prevent the light from being burnt off because of over-heating.