

SHOT LIGHT SURFACE



MORE INFO >>

		CCT	Beam	LOR
SHOT LIGHT S Surface	A486-00-00- WT NT NTMG	2700K	18°	89%
	A486-00-01- WT NT NTMG	3000K	18°	89%
	A486-00-02- WT NT NTMG	4000K	18°	89%
	A486-00-10- WT NT NTMG WTW	2700K	40°	89%
	A486-00-11- WT NT NTMG WTW	3000K	40°	89%
	A486-00-12- WT NT NTMG WTW	4000K	40°	89%

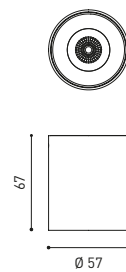
III IP20 | CRI>90 | L80B10 >60,000h



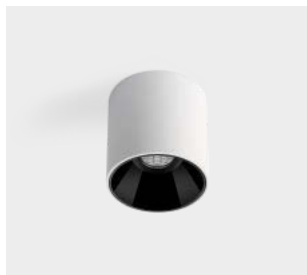
*DRIVER OPTIONS	P	I	CCT	Flux
0434-00-39 1 to 3 Shot Light S Surface	4W	350mA	2700K	500 lm
			3000K	520 lm
			4000K	560 lm
0434-00-42 1 to 3 Shot Light S Surface	6W	500mA	2700K	640 lm
			3000K	670 lm
			4000K	720 lm
0434-00-40 1 to 3 Shot Light S Surface	9W	700mA	2700K	870 lm
			3000K	910 lm
			4000K	970 lm
0434-00-46 1 to 3 Shot Light S Surface	9W	700mA	2700K	870 lm
			3000K	910 lm
			4000K	970 lm
0434-01-25 1 to 5 Shot Light S Surface	9W	700mA	2700K	870 lm
			3000K	910 lm
			4000K	970 lm

220-240 V~ | DRIVER MUST BE PLACED ON REMOTE DIM PHASE CUT & OTHER DIM OPTIONS PLEASE CONSULT

i » 282



FINISHING	Body	Lampshade
WT	WT □	N ■
NT	NT ■	N ■
NTMG	NT ■	MG ■
WTW	WT □	W □



MORE INFO >>

		CCT	Beam	LOR
SHOT LIGHT M Surface	A396-00-10- WT NT MG MC NTMG WTW	2700K	38°	86%
	A396-00-11- WT NT MG MC NTMG WTW	3000K	38°	86%
	A396-00-12- WT NT MG MC NTMG WTW	4000K	38°	86%

IP20 | CRI>90 | L90B10 >55.000h

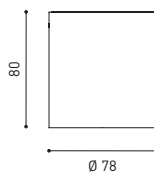
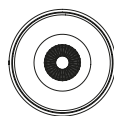


*DRIVER OPTIONS	P	I	CCT	Flux
0434-00-36	4,5W	140mA	2700K	660 lm
			3000K	690 lm
			4000K	700 lm
0434-00-37	6,5W	200mA	2700K	910 lm
			3000K	940 lm
			4000K	960 lm
0434-00-39	12,4W	350mA	2700K	1470 lm
			3000K	1530 lm
			4000K	1550 lm
0434-00-79	12,4W	350mA	2700K	1470 lm
			3000K	1530 lm
			4000K	1550 lm



220 V~ | DRIVER MUST BE PLACED ON REMOTE
240 V~ | DIM PHASE CUT & OTHER DIM OPTIONS PLEASE CONSULT

» 282



FINISHING**	Body	Lampshade
WT	WT □	N ■
NT	NT ■	N ■
MG	MG ■	N ■
MC	MC ■	N ■
NTMG	NT ■	MG ■
WTW	WT □	W □



SHOT LIGHT SURFACE



MORE INFO >>

		P	CCT	Beam	I	Flux	LOR
SHOT LIGHT S Surface 25	A493-0- ☉ -00- WT NT NTMG	6W	2700K	18°	500mA	640 lm	89%
	A493-0- ☉ -01- WT NT NTMG	6W	3000K	18°	500mA	670 lm	89%
	A493-0- ☉ -02- WT NT NTMG	6W	4000K	18°	500mA	720 lm	89%
	A493-0- ☉ -10- WT NT NTMG WTW	6W	2700K	40°	500mA	640 lm	89%
	A493-0- ☉ -11- WT NT NTMG WTW	6W	3000K	40°	500mA	670 lm	89%
	A493-0- ☉ -12- WT NT NTMG WTW	6W	4000K	40°	500mA	720 lm	89%

220
240 V~ | IP20 | CRI>90 | L80B10
>60.000 h



☉ *OPTIONS

2	DIM DALI
3	DIM Push
5	DIM Phase Cut

OTHER DIM OPTIONS PLEASE CONSULT

FINISHING	Body	Lampshade
WT	WT	N
NT	NT	N
NTMG	NT	MG
WTW	WT	W

