

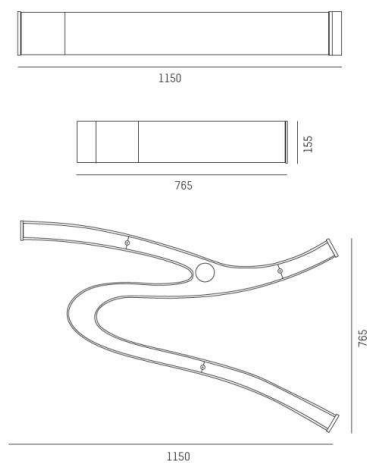
LASH

660-30145

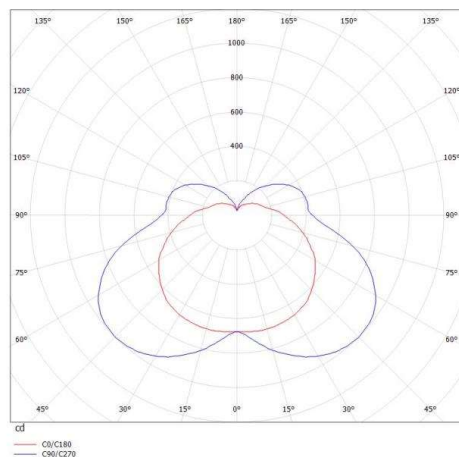
LASH SD WALL / CEILING LUMINAIRE made of metal, white chrome, satined PMMA opal diffuser satined white, light output direct, with converter, dimmability: not dimmable, IP20



DRAWING



LIGHT DISTRIBUTION CURVE



TECHNICAL DETAILS

System perform. [W]	48
Bulb type	LED
Luminous flux [lm]	5650
Colour temp. [K]	4000K
CRI	>80
Optics	PMMA opal diffuser
Designer	Serge Cornelissen
Converter	with converter
Dimming	not dimmable
Light output	direct
Voltage [V]	220-240V 50/60Hz
Material	metal
Length [mm]	1150
Width [mm]	765
Height [mm]	155
IP protection class	IP20
Voltage class	protection cl. I
Net weight [kg]	8,21
Colour lamp	white chrome
Colour of glass/shade	satined white
EAN-Number	9008905518553
Lifetime [h]	L80 B10 50 000
Energy efficiency cl.	D



The values are rated values. Power and luminous flux are initially subject to a tolerance of +/- 10%. Colour temperature tolerance: +/- 150 K. The values apply to an ambient temperature of 25°C unless otherwise specified.

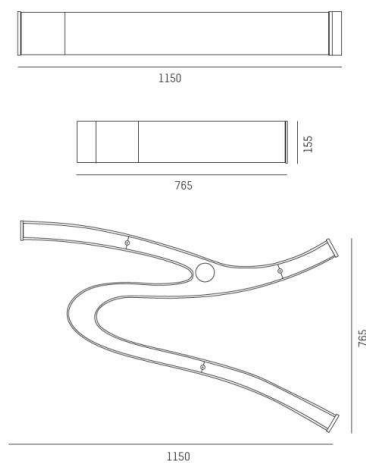
LASH

660-30145ddd

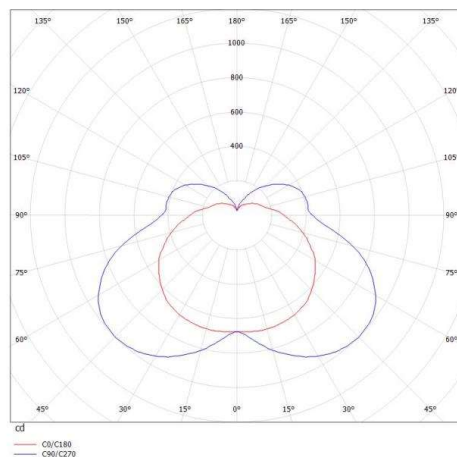
LASH SD WALL / CEILING LUMINAIRE made of metal, white chrome, satined PMMA opal diffuser satined white, light output direct, with converter, dimmability: DALI, IP20



DRAWING



LIGHT DISTRIBUTION CURVE



TECHNICAL DETAILS

System perform. [W]	48
Bulb type	LED
Luminous flux [lm]	5650
Colour temp. [K]	4000K
CRI	>80
Optics	PMMA opal diffuser
Designer	Serge Cornelissen
Converter	with converter
Light output	direct
Voltage [V]	220-240V 50/60Hz
Material	metal
Length [mm]	1150
Width [mm]	765
Height [mm]	155
IP protection class	IP20
Voltage class	protection cl. I
Net weight [kg]	8,30
Colour lamp	white chrome
Colour of glass/shade	satined white
EAN-Number	9008905518577
Lifetime [h]	L80 B10 50 000
Energy efficiency cl.	D



The values are rated values. Power and luminous flux are initially subject to a tolerance of +/- 10%. Colour temperature tolerance: +/- 150 K. The values apply to an ambient temperature of 25°C unless otherwise specified.

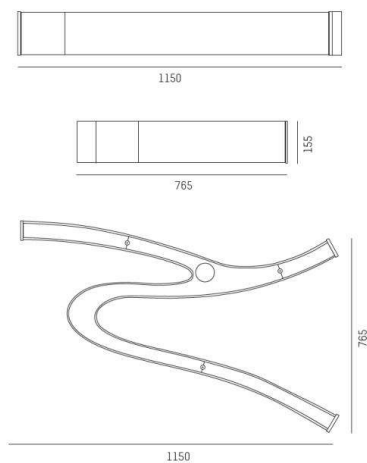
LASH

660-30195

LASH SD WALL / CEILING LUMINAIRE made of metal, white chrome, satined PMMA opal diffuser satined white, light output direct, with converter, dimmability: not dimmable, IP20



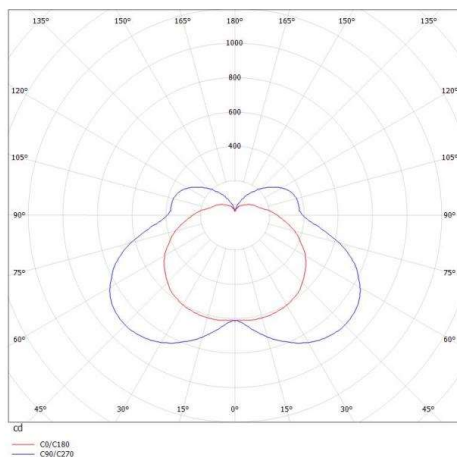
DRAWING



TECHNICAL DETAILS

System perform. [W]	48
Bulb type	LED
Luminous flux [lm]	5100
Colour temp. [K]	3000K
CRI	>80
Optics	PMMA opal diffuser
Designer	Serge Cornelissen
Converter	with converter
Dimming	not dimmable
Light output	direct
Voltage [V]	220-240V 50/60Hz
Material	metal
Length [mm]	1150
Width [mm]	765
Height [mm]	155
IP protection class	IP20
Voltage class	protection cl. I
Net weight [kg]	8,21
Colour lamp	white chrome
Colour of glass/shade	satined white
EAN-Number	9008905512025
Lifetime [h]	L80 B10 50 000
Energy efficiency cl.	D

LIGHT DISTRIBUTION CURVE

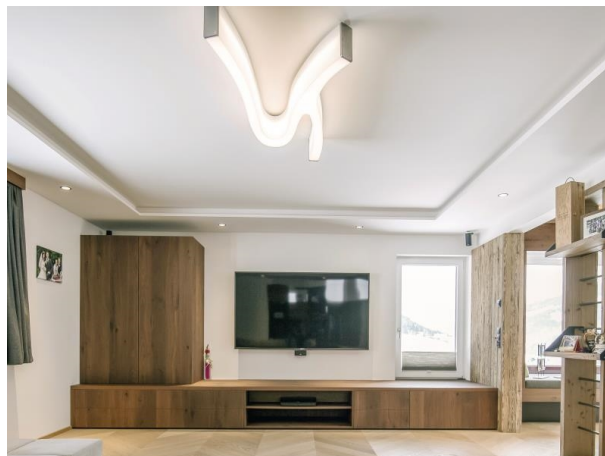


The values are rated values. Power and luminous flux are initially subject to a tolerance of +/- 10%. Colour temperature tolerance: +/- 150 K. The values apply to an ambient temperature of 25°C unless otherwise specified.

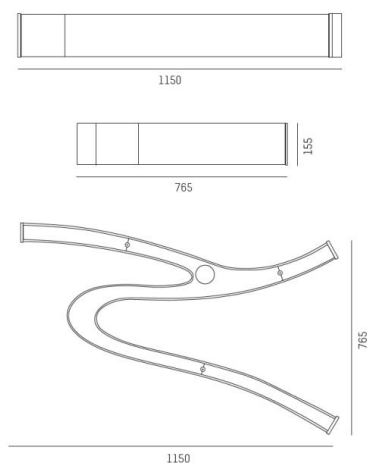
LASH

660-30195ddd

LASH SD WALL / CEILING LUMINAIRE made of metal, white chrome, satined PMMA opal diffuser satined white, light output direct, with converter, dimmability: DALI, IP20



DRAWING



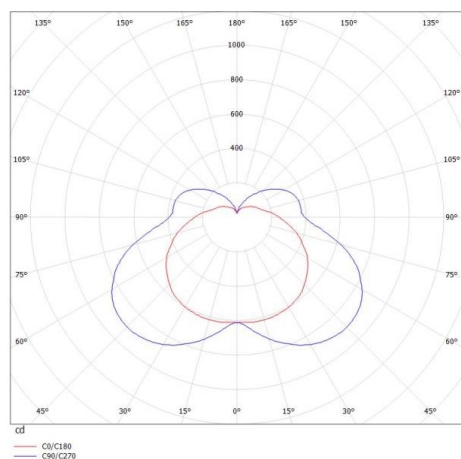
TECHNICAL DETAILS

System perform. [W]	48
Bulb type	LED
Luminous flux [lm]	5100
Colour temp. [K]	3000K
CRI	>80
Optics	PMMA opal diffuser
Designer	Serge Cornelissen
Converter	with converter
Light output	direct
Voltage [V]	220-240V 50/60Hz
Material	metal

Length [mm]	764,3
Width [mm]	765
Height [mm]	155
IP protection class	IP20
Voltage class	protection cl. I
Net weight [kg]	8,24

Colour lamp	white chrome
Colour of glass/shade	satined white
EAN-Number	9008905512582
Lifetime [h]	L80 B10 50 000
Energy efficiency cl.	D

LIGHT DISTRIBUTION CURVE



The values are rated values. Power and luminous flux are initially subject to a tolerance of +/- 10%. Colour temperature tolerance: +/- 150 K. The values apply to an ambient temperature of 25°C unless otherwise specified.