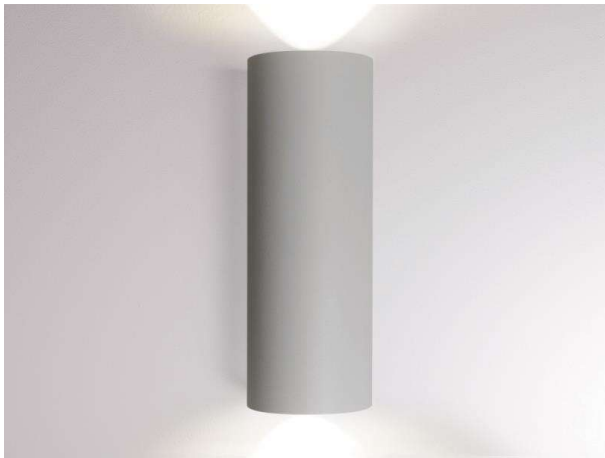


**BEN**

**472-0050890003004**

BEN ROUND W SURFACE MOUNTED WALL LUMINAIRE made of aluminium, silver matt, similar to RAL 9006, light output direct / indirect, with converter, dimmability: not dimmable, IP65



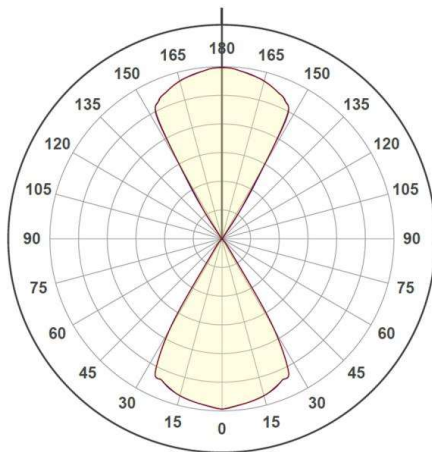
**DRAWING**



**TECHNICAL DETAILS**

System perform. [W]	9
Bulb type	LED
Luminous flux [lm]	232
Colour temp. [K]	3000K
CRI	>90
Converter	with converter
Dimming	not dimmable
Light output	direct / indirect
Voltage [V]	220-240V 50/60Hz
Material	aluminium
Length [mm]	250
Height [mm]	250
Diameter [mm]	90
Troat [mm]	95
IP protection class	IP65
Voltage class	protection cl. I
Net weight [kg]	2,00
Colour lamp	silver matt
RAL	9006
EAN-Number	9010506130799
Lifetime [h]	L80 B10 20 000
Energy efficiency cl.	E

**LIGHT DISTRIBUTION CURVE**



The values are rated values. Power and luminous flux are initially subject to a tolerance of +/- 10%. Colour temperature tolerance: +/- 150 K. The values apply to an ambient temperature of 25°C unless otherwise specified.